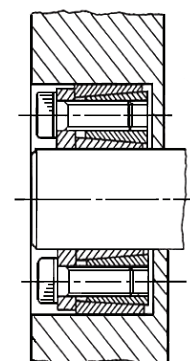
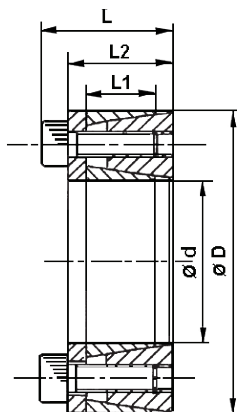
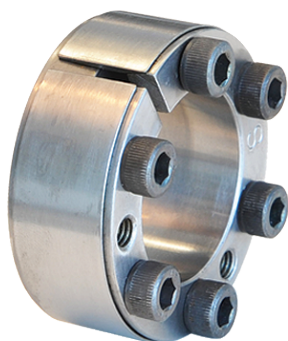


BTK 45 Locking devices

Moyeux de serrage



BTK 45	Dimensions of locking devices			Transmitted Axial Force	Transmitted Torque	Contact pressure		Locking screws		Locking Torque
	ø d x ø D	L1	L2			L	Shaft h8	Hub H8	DIN 912 - Mat. 12.9	
18 x 40	12	18,5	24,5	18	165	N/mm ²	N/mm ²	N°	Size	Nm
18 x 40	12	18,5	24,5	18	165	185	83	4	M6 x 16	17
19 x 41	12	18,5	24,5	18	174	176	81	4	M6 x 16	17
20 x 42	12	18,5	24,5	18	183	167	79	4	M6 x 16	17
22 x 44	12	18,5	24,5	18	201	152	76	4	M6 x 16	17
24 x 46	12	18,5	24,5	27	329	209	109	6	M6 x 16	17
25 x 47	12	18,5	24,5	27	343	200	106	6	M6 x 16	17
28 x 50	12	18,5	24,5	27	384	179	100	6	M6 x 16	17
30 x 52	12	18,5	24,5	27	412	167	96	6	M6 x 16	17
32 x 54	12	18,5	24,5	27	439	156	93	6	M6 x 16	17
35 x 57	15	22	28	27	480	117	72	6	M6 x 18	17
38 x 60	15	22	28	36,5	695	143	91	8	M6 x 18	17
40 x 62	15	22	28	36,5	732	170	88	8	M6 x 18	17
42 x 70	18	28	36	68	1427	190	111	8	M8 x 25	42
45 x 73	18	28	36	68	1529	210	106	8	M8 x 25	42
48 x 76	18	28	36	68	1631	210	102	8	M8 x 25	42
50 x 78	18	28	36	68	1699	190	99	8	M8 x 25	42
55 x 83	18	28	36	68	1869	180	93	8	M8 x 25	42
60 x 88	18	28	36	68	2039	190	88	8	M8 x 25	42
65 x 93	22	35	45	68	2208	180	65	8	M8 x 25	42
70 x 105	22	35	45	107	3759	180	91	8	M10 x 30	83
75 x 110	22	35	45	107	4027	180	87	8	M10 x 30	83
80 x 115	22	35	45	107	4296	170	83	8	M10 x 30	83
85 x 120	22	35	45	134	5705	180	100	10	M10 x 30	83

Recommended machining tolerances for pressure surfaces : H8 for Hub and h8 for Shaft.