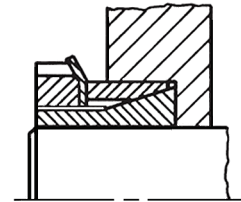
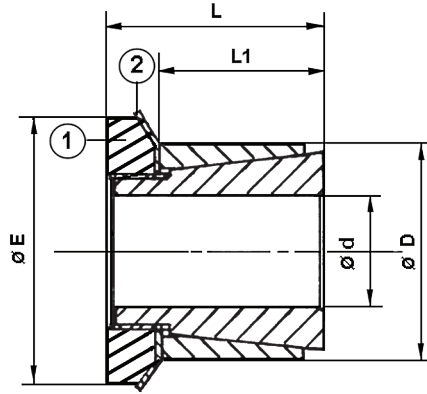


**BTK 55**

**Locking devices**  
**Moyeux de serrage**



BTK 55	Dimensions of locking devices			Transmitted Axial Force kN	Transmitted Torque Nm	Contact pressure		Locking Nut N° 1	Locking Washer N° 2	Locking Torquer Nm	
	Ø d x Ø D	L1	L			Ø E	Shaft h8 N/mm <sup>2</sup>				Hub H8 N/mm <sup>2</sup>
14 x 25	23	31	32	8	65	80	45	KM4	MB4	M20x1	95
15 x 25	23	31	32	9	77	91	55	KM4	MB4	M20x1	95
18 x 30	24	33	38	13	125	98	59	KM5	MB5	M25x1,5	160
19 x 30	24	33	38	13	132	93	59	KM5	MB5	M25x1,5	160
20 x 30	24	33	38	13	139	88	59	KM5	MB5	M25x1,5	160
24 x 35	29	38	45	15	202	74	51	KM6	MB6	M30x1,5	220
25 x 35	29	38	45	15	210	71	51	KM6	MB6	M30x1,5	220
28 x 40	34	44	52	20	312	76	53	KM7	MB7	M35x1,5	340
30 x 40	34	44	52	20	335	71	53	KM7	MB7	M35x1,5	340
35 x 45	34	45	58	25	483	75	58	KM8	MB8	M40x1,5	480
40 x 50	35	46	65	31	696	82	66	KM9	MB9	M45x1,5	680
45 x 55	35	47	70	36	902	84	69	KM10	MB10	M50x1,5	870
50 x 60	36	48	75	37	1014	77	64	KM11	MB11	M55x2	970
55 x 65	36	48	80	38	1158	73	61	KM12	MB12	M60x2	1100
60 x 70	36	50	85	41	1379	73	62	KM13	MB13	M65x2	1300

Recommended machining tolerances for pressure surfaces : H8 for Hub and h8 for Shaft.