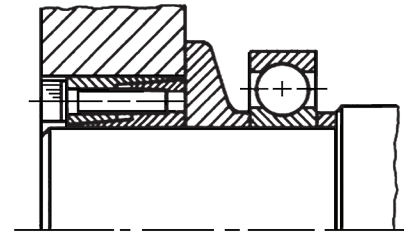
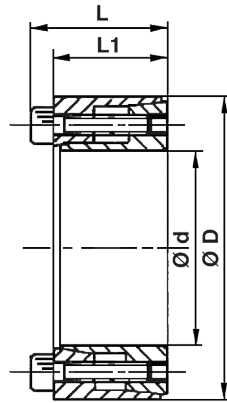
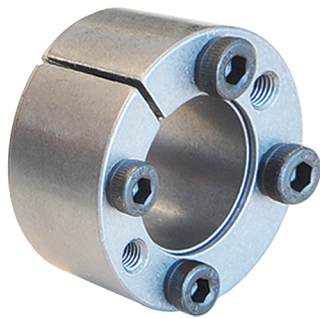


# BTK 61 Locking devices

## Moyeux de serrage



BTK 61	Dimensions of locking devices		Transmitted Axial Force	Transmitted Torque	Contact pressure		Locking screws		Locking Torque
	Ø d x Ø D	L1			L	Shaft h8	Hub H8	DIN 912 - Mat. 12.9	
			kN	Nm	N/mm <sup>2</sup>	N/mm <sup>2</sup>	N°		Nm
10 x 20	13	15,5	3,8	19	89	45	4	M2,5 x 12	1,2
12 x 22	13	15,5	3,8	23	75	41	4	M2,5 x 12	1,2
14 x 26	17	20	5,5	39	71	38	4	M3 x 16	2,1
15 x 28	17	20	5,5	42	66	35	4	M3 x 16	2,1
16 x 32	17	21	9,6	77	107	54	4	M4 x 16	4,9
18 x 35	21	25	9,6	87	77	40	4	M4 x 16	4,9
19 x 35	21	25	9,6	91	73	40	4	M4 x 16	4,9
20 x 38	21	26	15,7	157	113	60	4	M5 x 20	10
22 x 40	21	26	15,7	173	103	57	4	M5 x 20	10
24 x 47	26	32	22,3	268	110	56	4	M6 x 24	17
25 x 47	26	32	22,3	279	105	56	4	M6 x 24	17
28 x 50	26	32	33,5	468	141	79	6	M6 x 24	17
30 x 55	26	32	33,5	502	132	72	6	M6 x 24	17
32 x 55	26	32	33,5	535	123	72	6	M6 x 24	17
35 x 60	31	37	44,6	781	125	73	8	M6 x 28	17
38 x 65	31	37	44,6	848	115	67	8	M6 x 28	17
40 x 65	31	37	44,6	892	110	67	8	M6 x 28	17
42 x 75	36	44	60,6	1272	122	68	6	M8 x 34	41
45 x 75	36	44	60,6	1363	113	68	6	M8 x 34	41
48 x 80	36	44	80,8	1938	142	85	8	M8 x 34	41
50 x 80	36	44	80,8	2019	136	85	8	M8 x 34	41

Recommended machining tolerances for pressure surfaces : H8 for Hub and h8 for Shaft.